

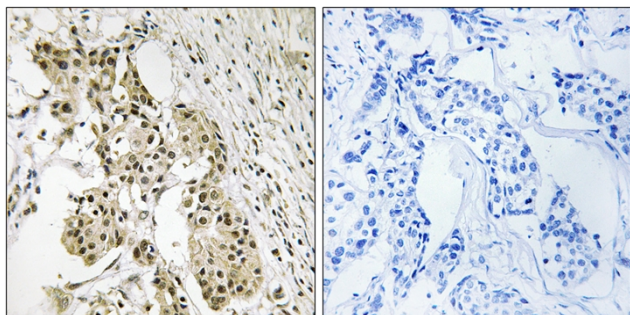


TAGAP Polyclonal Antibody

Catalog No	YP-Ab-16253
Isotype	IgG
Reactivity	Human;Rat;Mouse;
Applications	IHC;IF;ELISA
Gene Name	TAGAP
Protein Name	T-cell activation Rho GTPase-activating protein
Immunogen	The antiserum was produced against synthesized peptide derived from human TAGAP. AA range:191-240
Specificity	TAGAP Polyclonal Antibody detects endogenous levels of TAGAP protein.
Formulation	Liquid in PBS containing 50% glycerol, 0.5% BSA and 0.02% sodium azide.
Source	Polyclonal, Rabbit,IgG
Purification	The antibody was affinity-purified from rabbit antiserum by affinity-chromatography using epitope-specific immunogen.
Dilution	IHC: 1/100 - 1/300. ELISA: 1/5000.. IF 1:50-200
Concentration	1 mg/ml
Purity	≥90%
Storage Stability	-20°C/1 year
Synonyms	TAGAP; TAGAP1; FKSG15; T-cell activation Rho GTPase-activating protein; T-cell activation GTPase-activating protein
Observed Band	
Cell Pathway	cytosol,
Tissue Specificity	Lung,Spleen,Synovial membrane tissue,
Function	function:May function as a GTPase-activating protein and may play important roles during T-cell activation.,similarity:Contains 1 Rho-GAP domain.,
Background	This gene encodes a member of the Rho GTPase-activator protein superfamily. The encoded protein may function as a Rho GTPase-activating protein. Alterations in this gene may be associated with several diseases, including rheumatoid arthritis, celiac disease, and multiple sclerosis. Alternate splicing results in multiple transcript variants encoding distinct isoforms. [provided by RefSeq, Jul 2013],
matters needing attention	Avoid repeated freezing and thawing!

Usage suggestions

This product can be used in immunological reaction related experiments. For more information, please consult technical personnel.

Products Images

Immunohistochemistry analysis of paraffin-embedded human breast carcinoma, using TAGAP Antibody. The picture on the right is blocked with the synthesized peptide.